

# EASTER ESCAPE ROOM

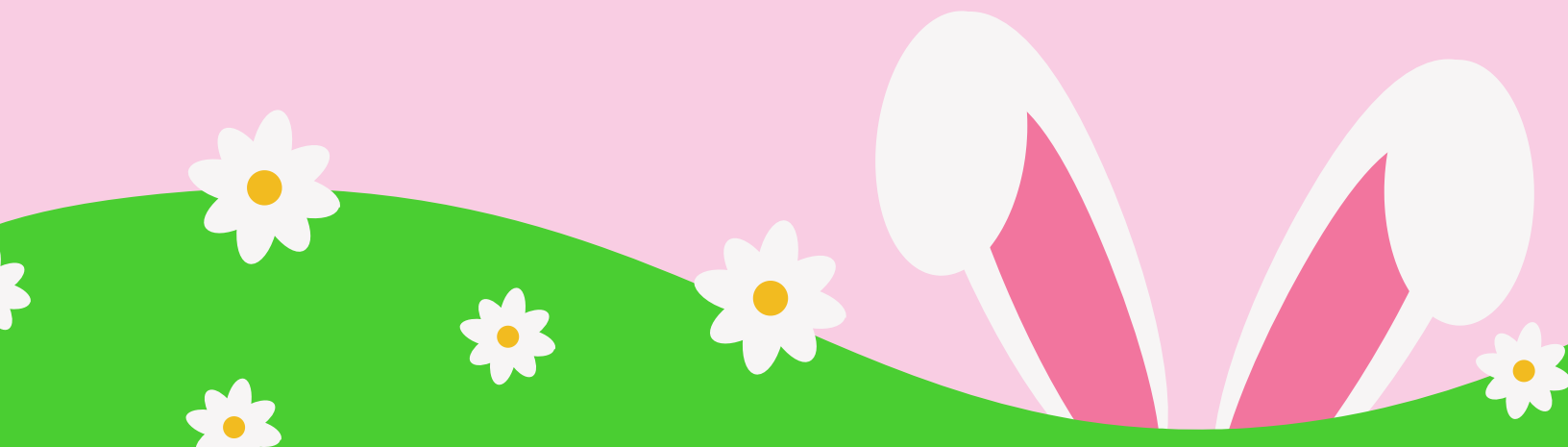
A game master is required to award the players their egg clues after each level's challenge is completed and the final envelope in this game.

## Solutions

Only read the next pages if you want to know the answers to the puzzles.

You can either print this out or keep it handy on your phone to refer to during gameplay.

Keep this out of sight during gameplay!



1

# INTRODUCE PLAYERS TO STORYLINE

Give the players the first page of the Escape Room to introduce them to the storyline.



In Level 1 the players will solve the riddle and arrange the rabbit's footprints to spell the name Fluffy to collect the first egg clue.



Keep this out of sight during gameplay!

2

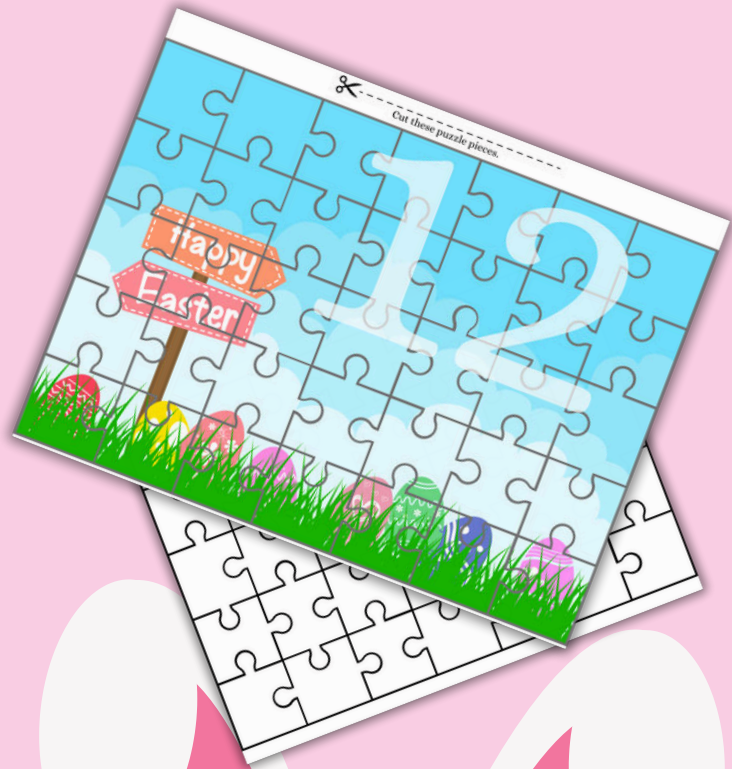
## CLUE #1



After solving the riddle on the first level, the players will be awarded their first egg clue from the game master.

For Level 2, the players should put the puzzle pieces together and look for the number in the image.

The number that they will find 12 will be equivalent to the letter in the alphabet which is "L".



Keep this out of sight during gameplay!

3

## CLUE #2

After the players put all the puzzle pieces together to discover the number 12 the game master will award them with their second egg clue.



For Level 3, using only the pictures and the equivalents given, the players should find the missing number equivalents to come up with the total sum of “7”. The letter in the alphabet equivalent to 7 is “O”.



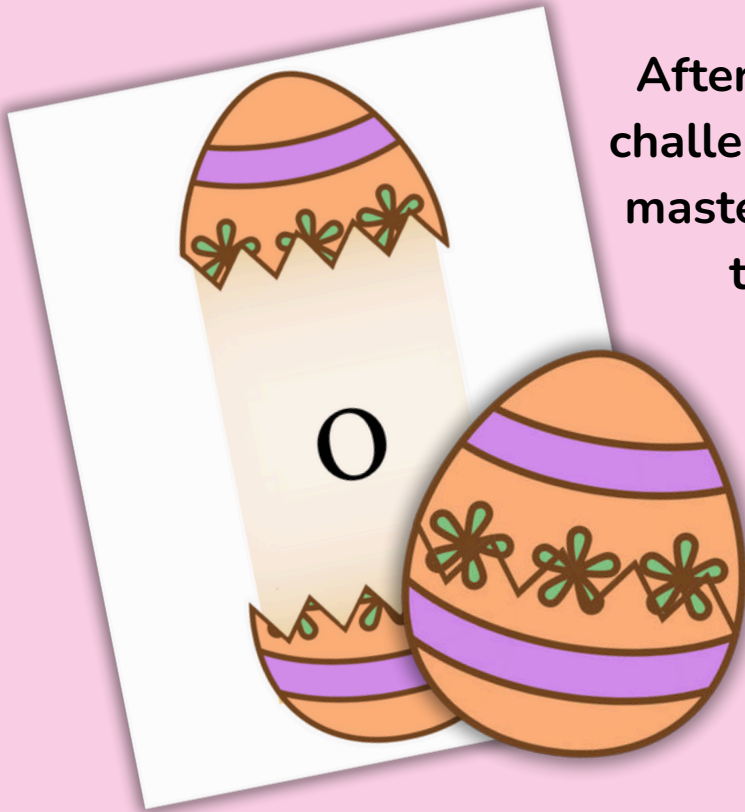
Keep this out of sight during gameplay!



4

## CLUE #3

After the players solved the challenge in level 3. The game master will award them with their third egg clue.



In Level 4, tape the two pages together and cut along the dashed line. Fold the paper behind each rabbit and slip it in the cut on the trail at the “start here” position.

Glue the sides of the doors over each egg house. The players should slide each rabbit down the trail until they reach the egg house. They cannot open any of the doors until all three rabbits have made it home. They will find a secret number “23” behind one of the doors!



The letter equivalent in the alphabet to 23 is “W”.

Keep this out of sight during gameplay!

5

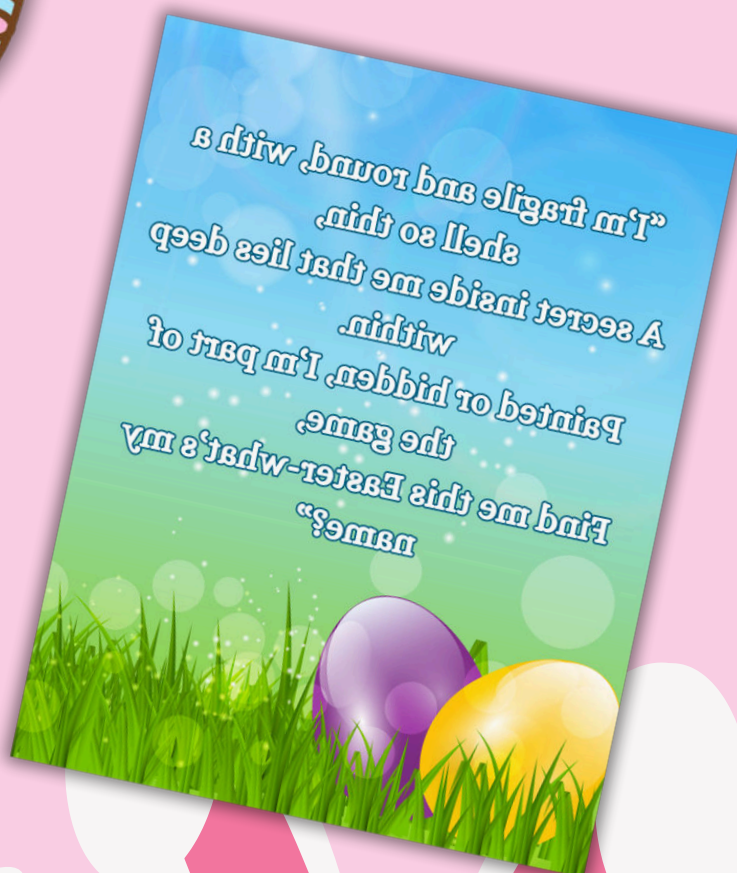
## CLUE #4



After the players solved the challenge in Level 4. The game master will give them their fourth egg clue.

In Level 5, the players will need to hold the paper in front of the mirror and try to answer the riddle.

The answer is egg. The first letter of the word “E” is their fifth clue.



Keep this out of sight during gameplay!

6

## CLUE #5

After the players finish the challenge in level 5, the game master will give them their fifth egg clue.



In Level 6, tell the players to flip over two picture cards at a time, looking for matches.

Each match earns them an egg with a fun question. If they answer correctly, they get a letter for a secret word. They need to find 7 pairs and complete the word “Rejoice” at the top of the page.

The first letter in the word “Rejoice” is their next clue.

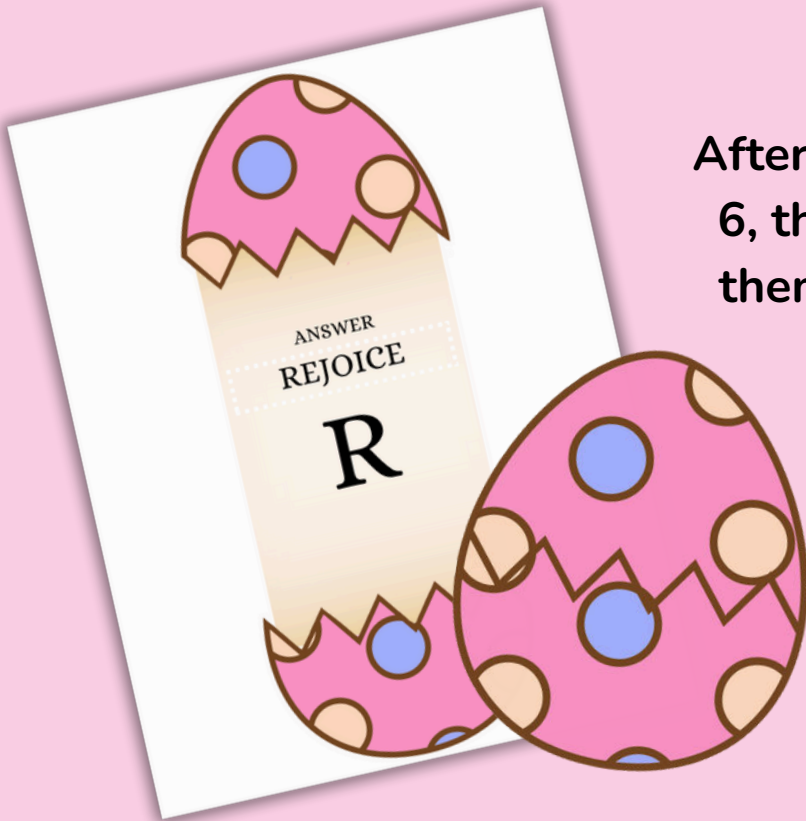


Keep this out of sight during gameplay!



7

## CLUE #6



After the players complete Level 6, the game master will award them with their sixth egg clue.

Players will take turns being blindfolded and trying to pin a flower onto the bunny picture. But before earning their turn, they must complete a fun challenge from one of the cards! The player who pins the flower in just the right spot wins the next egg clue containing a secret letter.



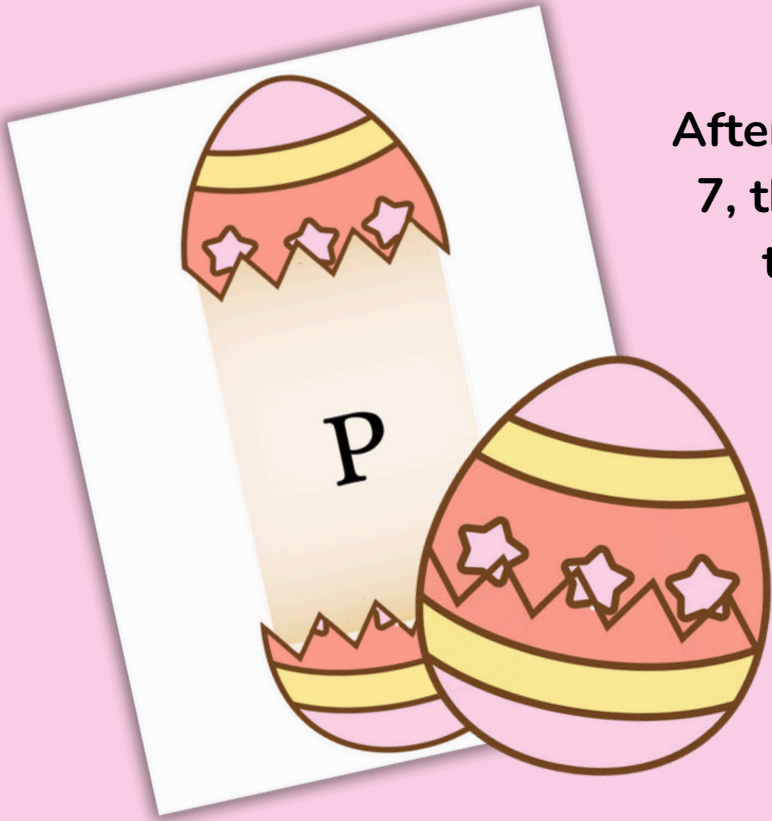
Keep this out of sight during gameplay!



8

## CLUE #7

After the players complete Level 7, the game master will award them with their 7th clue.



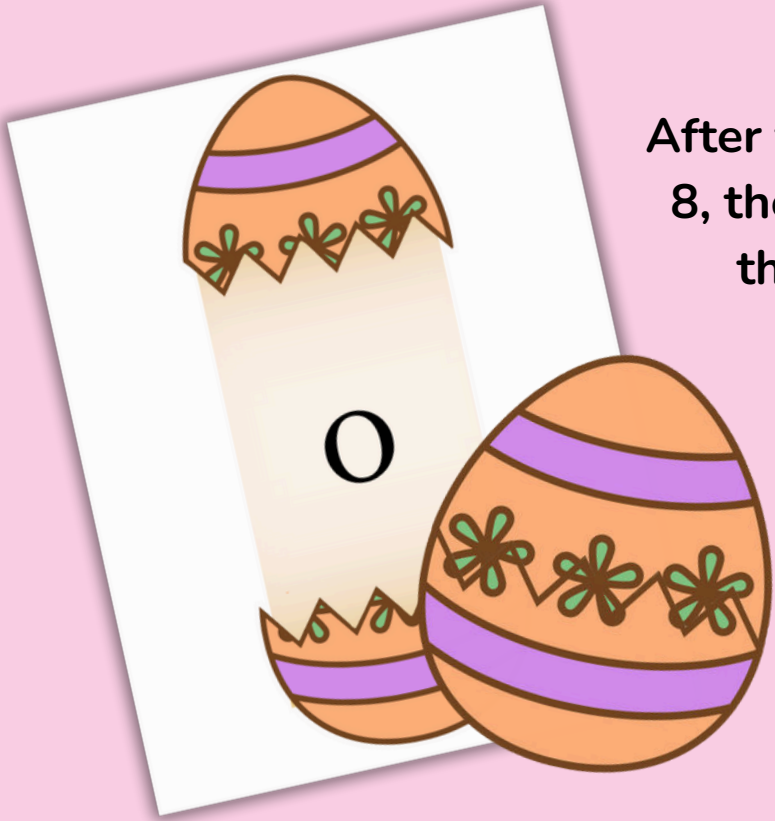
For Level 8, have the group search the picture to find all the hidden items from the list. Each time they spot one, they should mark it with a red Easter egg. Once all the items are found and marked, the red easter eggs should be the shape of the letter “O”.



Keep this out of sight during gameplay!

9

## CLUE #8



After the players complete Level 8, the game master will award them with their 8th clue.

For Level 9, players must search the room to find all the scattered pieces of the picture. Once they've gathered them, they'll work together to put the pieces back in place and complete the image. When the picture is whole, they'll be awarded the final clue to uncover the secret location of the magical egg!

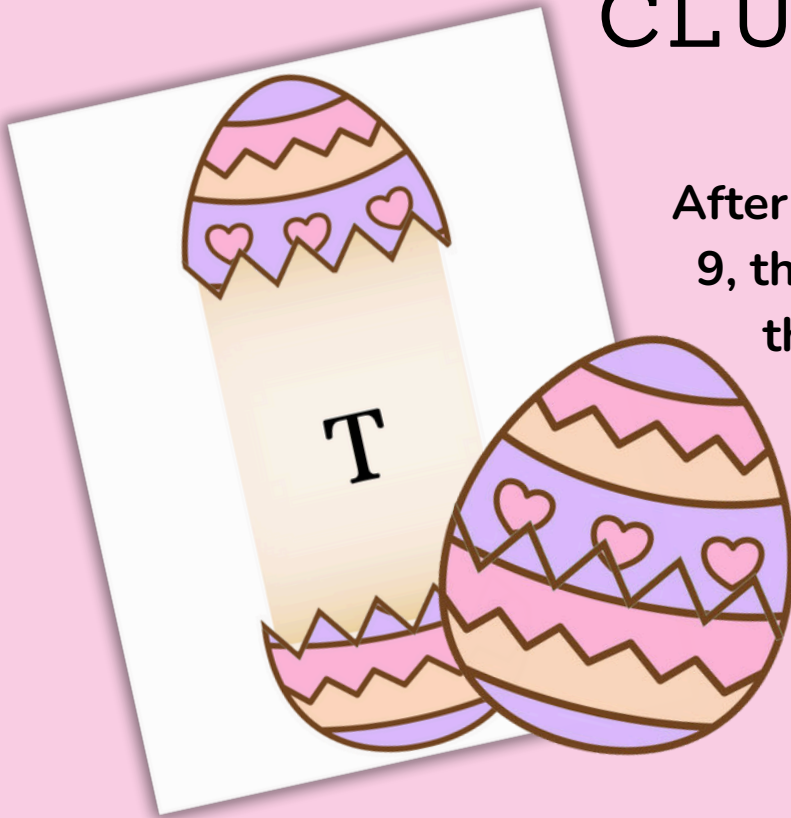


Keep this out of sight during gameplay!

10

## CLUE #9

After the players complete Level 9, the game master will award them with their 9th clue.



After completing all the challenges, hand the players this page and they will use all of their egg clues and write the letters they've collected in the designated boxes to reveal where the magic egg is hidden.



Keep this out of sight during gameplay!



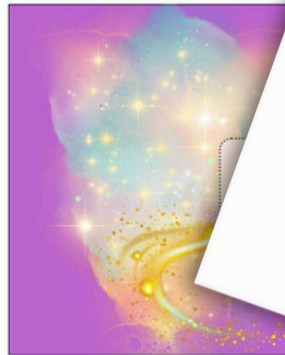
Cut this card out and place it in the envelope along with the magical easter egg in a flower pot. When players place the envelope they will receive the magical easter egg along with the note!

Yippee! You did it! 🌟  
You're an Easter superstar!  
🌟 You've cracked every  
challenge like a real egg-  
spert! The Easter Bunny will  
be bouncing with joy when  
he gets his magical egg back  
—thanks to you! Hooray! 🌟

cut  
then  
fold  
then  
glue



Glue the folded squares between the card and the magical egg in the flower pot so that the magical egg will pop off of the card.



After they have written the words “flower pot” on the page, the players will be presented with an envelope that holds the magical egg they’ve been searching for!

