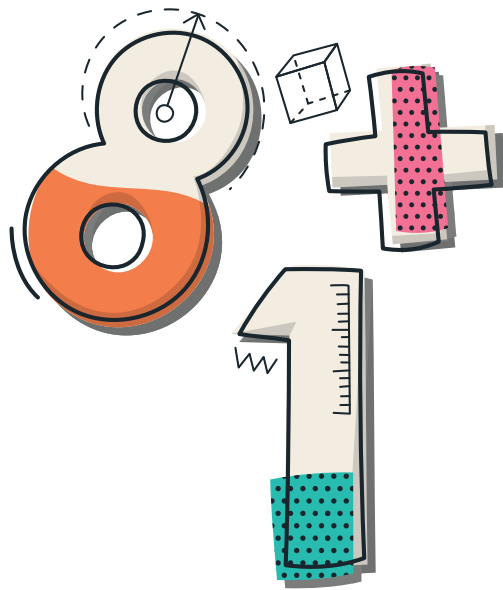


# MATH QUEST CALENDAR

DAILY MATH CHALLENGE  
WITH ANSWERS



# JANUARY

## MATH QUEST

### DAILY MATH CHALLENGE

<p>01 IF IT SNOWS FOR 24 HOURS IN A ROW, HOW MANY DAYS IS THAT?</p> <input type="text"/>	<p>02 WHAT IS <math>15 - 7</math>?</p> <input type="text"/>	<p>03 DOUBLE THE NUMBER 4.</p> <input type="text"/>	<p>04 A SLED COSTS 20 COINS, AND YOU HAVE 8 COINS. HOW MANY MORE COINS DO YOU NEED?</p> <input type="text"/>	<p>05 WHAT COMES AFTER 29 IN COUNTING?</p> <input type="text"/>	<p>06 COMPLETE THE SEQUENCE: 10, 20, 30, __, __.</p> <input type="text"/> <input type="text"/>	<p>07 IF THERE ARE 2 SNOWMEN, AND EACH HAS 3 BUTTONS, HOW MANY BUTTONS ARE THERE IN TOTAL?</p> <input type="text"/>
<p>08 WHAT IS <math>10 + 5</math>?</p> <input type="text"/>	<p>09 FIND THE MISSING NUMBER: <math>7 + \_\_ = 14</math>.</p> <input type="text"/>	<p>10 WHAT IS 3 MORE THAN 11?</p> <input type="text"/>	<p>11 IF THERE ARE 18 SNOWFLAKES ON A PAGE, HOW MANY WILL THERE BE IF 2 MORE FALL?</p> <input type="text"/>	<p>12 SUBTRACT 9 FROM 20.</p> <input type="text"/>	<p>13 COUNT BY TWOS: 2, 4, 6, __, __.</p> <input type="text"/> <input type="text"/>	<p>14 A PENGUIN SLIDES 5 YARDS, AND ANOTHER SLIDES 7 YARDS. HOW FAR DID HE SLIDE?</p> <input type="text"/>
<p>15 WHAT IS 6 LESS THAN 12?</p> <input type="text"/>	<p>16 IF YOU DRINK 2 CUPS OF COCOA EVERY DAY, HOW MANY CUPS DO YOU DRINK IN 6 DAYS?</p> <input type="text"/>	<p>17 DOUBLE THE NUMBER 7.</p> <input type="text"/>	<p>18 WHAT IS 9 MORE THAN 13?</p> <input type="text"/>	<p>19 FIND THE SUM OF 8, 2, AND 4.</p> <input type="text"/>	<p>20 IF THERE ARE 25 ICICLES AND 8 MELT, HOW MANY ARE LEFT?</p> <input type="text"/>	<p>21 COMPLETE THE SEQUENCE: 5, 10, 15, __, __.</p> <input type="text"/> <input type="text"/>
<p>22 SUBTRACT 13 FROM 30.</p> <input type="text"/>	<p>23 WHAT IS THE VALUE OF THE TENS PLACE IN 23?</p> <input type="text"/>	<p>24 ADD <math>11 + 9</math>.</p> <input type="text"/>	<p>25 A WINTER SCARF HAS 12 STRIPES. IF 4 ARE RED, HOW MANY ARE NOT RED?</p> <input type="text"/>	<p>26 WHAT IS 10 LESS THAN 50?</p> <input type="text"/>	<p>27 FIND THE MISSING NUMBER: <math>\_\_ + 6 = 15</math>.</p> <input type="text"/>	<p>28 WHAT IS 3 TIMES 4?</p> <input type="text"/>
<p>29 THERE ARE 6 MITTENS IN A DRAWER. HOW MANY PAIRS OF MITTENS ARE THERE?</p> <input type="text"/>	<p>30 ADD 14 AND 8.</p> <input type="text"/>	<p>31 WHAT IS 20 MORE THAN 40?</p> <input type="text"/>				

WORK SPACE

# FEBRUARY

## MATH QUEST

### DAILY MATH CHALLENGE

<p>If you give 3 candies to 5 friends, how many candies do you give away?</p> <p>01</p> <input type="text"/>	<p>SUBTRACT 8 FROM 16.</p> <p>02</p> <input type="text"/>	<p>WHAT IS DOUBLE 6?</p> <p>03</p> <input type="text"/>	<p>A HEART NECKLACE COSTS 24 COINS. IF YOU HAVE 15, HOW MANY MORE DO YOU NEED?</p> <p>04</p> <input type="text"/>	<p>ADD <math>12 + 9</math>.</p> <p>05</p> <input type="text"/>	<p>COMPLETE THE SEQUENCE: 2, 4, 6, __, __.</p> <p>06</p> <input type="text"/> <input type="text"/>	<p>IF A BOX HAS 18 CHOCOLATES AND YOU EAT 5, HOW MANY ARE LEFT?</p> <p>07</p> <input type="text"/>
<p>WHAT IS 7 MORE THAN 19?</p> <p>08</p> <input type="text"/>	<p>FIND THE MISSING NUMBER: <math>5 + \_\_ = 14</math>.</p> <p>09</p> <input type="text"/>	<p>COUNT BY FIVES: 5, 10, 15, __, __.</p> <p>10</p> <input type="text"/>	<p>SUBTRACT 10 FROM 30.</p> <p>11</p> <input type="text"/>	<p>A BOUQUET HAS ROSES AND 7 TULIPS. HOW MANY FLOWERS ARE THERE IN TOTAL?</p> <p>12</p> <input type="text"/>	<p>WHAT IS 4 TIMES 3?</p> <p>13</p> <input type="text"/>	<p>FIND THE SUM OF 9, 8, AND 3.</p> <p>14</p> <input type="text"/>
<p>WHAT IS 12 LESS THAN 25?</p> <p>15</p> <input type="text"/>	<p>IF YOU READ 2 BOOKS EVERY WEEK, HOW MANY BOOKS DO YOU READ IN 4 WEEKS?</p> <p>16</p> <input type="text"/>	<p>DOUBLE THE NUMBER 8.</p> <p>17</p> <input type="text"/>	<p>WHAT IS 6 MORE THAN 21?</p> <p>18</p> <input type="text"/>	<p>SUBTRACT 15 FROM 40.</p> <p>19</p> <input type="text"/>	<p>COMPLETE THE SEQUENCE: 1, 3, 5, __, __.</p> <p>20</p> <input type="text"/> <input type="text"/>	<p>WHAT IS THE VALUE OF THE TENS PLACE IN 42?</p> <p>21</p> <input type="text"/>
<p>ADD <math>17 + 6</math>.</p> <p>22</p> <input type="text"/>	<p>IF THERE ARE 28 VALENTINES IN A BOX, AND YOU USE 11, HOW MANY ARE LEFT?</p> <p>23</p> <input type="text"/>	<p>WHAT IS 20 LESS THAN 60?</p> <p>24</p> <input type="text"/>	<p>FIND THE MISSING NUMBER: <math>\_\_ + 7 = 20</math>.</p> <p>25</p> <input type="text"/>	<p>MULTIPLY 5 BY 4.</p> <p>26</p> <input type="text"/>	<p>IF THERE ARE 14 COOKIES AND 7 KIDS, HOW MANY COOKIES DOES EACH KID GET?</p> <p>27</p> <input type="text"/>	<p>WHAT IS 50 MORE THAN 25?</p> <p>28</p> <input type="text"/>

WORK SPACE

# MARCH

## MATH QUEST

### DAILY MATH CHALLENGE

<p>A GARDEN HAS 6 TULIPS, AND 5 MORE BLOOM. HOW MANY ARE THERE NOW? <sup>01</sup></p> <input type="text"/>	<p>SUBTRACT 12 FROM 20. <sup>02</sup></p> <input type="text"/>	<p>WHAT IS 3 TIMES 3? <sup>03</sup></p> <input type="text"/>	<p>ADD 15 AND 7. <sup>04</sup></p> <input type="text"/>	<p>WHAT NUMBER COMES AFTER 49? <sup>05</sup></p> <input type="text"/>	<p>COMPLETE THE SEQUENCE: 10, 15, 20, __, __. <sup>06</sup></p> <input type="text"/> <input type="text"/>	<p>IF THERE ARE 5 FLOWERS IN EACH POT, AND THERE ARE 4 POTS, HOW MANY FLOWERS ARE THERE IN TOTAL? <sup>07</sup></p> <input type="text"/>
<p>WHAT IS 9 MORE THAN 24? <sup>08</sup></p> <input type="text"/>	<p>FIND THE MISSING NUMBER: <math>10 + \_\_ = 25</math>. <sup>09</sup></p> <input type="text"/>	<p>SUBTRACT 8 FROM 50. <sup>10</sup></p> <input type="text"/>	<p>COUNT BY TENS: 10, 20, 30, __, __. <sup>11</sup></p> <input type="text"/> <input type="text"/>	<p>IF 3 KIDS EACH FIND 4 EGGS, HOW MANY EGGS ARE THERE? <sup>12</sup></p> <input type="text"/>	<p>WHAT IS 6 TIMES 2? <sup>13</sup></p> <input type="text"/>	<p>FIND THE SUM OF 11, 7, AND 3. <sup>14</sup></p> <input type="text"/>
<p>WHAT IS 5 LESS THAN 18? <sup>15</sup></p> <input type="text"/>	<p>IF YOU PICK 2 APPLES EVERY DAY, HOW MANY APPLES DO YOU PICK IN 7 DAYS? <sup>16</sup></p> <input type="text"/>	<p>DOUBLE THE NUMBER 9. <sup>17</sup></p> <input type="text"/>	<p>WHAT IS 15 MORE THAN 28? <sup>18</sup></p> <input type="text"/>	<p>SUBTRACT 20 FROM 50. <sup>19</sup></p> <input type="text"/>	<p>COMPLETE THE SEQUENCE: 3, 6, 9, __, __. <sup>20</sup></p> <input type="text"/> <input type="text"/>	<p>WHAT IS THE VALUE OF THE TENS PLACE IN 65? <sup>21</sup></p> <input type="text"/>
<p>ADD <math>21 + 8</math>. <sup>22</sup></p> <input type="text"/>	<p>IF THERE ARE 36 CARROTS AND 14 ARE EATEN, HOW MANY ARE LEFT? <sup>23</sup></p> <input type="text"/>	<p>WHAT IS 40 LESS THAN 100? <sup>24</sup></p> <input type="text"/>	<p>FIND THE MISSING NUMBER: <math>\_\_ + 9 = 30</math>. <sup>25</sup></p> <input type="text"/>	<p>MULTIPLY 7 BY 3. <sup>26</sup></p> <input type="text"/>	<p>IF THERE ARE 15 FROGS AND THEY JUMP INTO 3 PONDS EQUALLY, HOW MANY FROGS ARE IN EACH POND? <sup>27</sup></p> <input type="text"/>	<p>ADD 27 AND 13. <sup>28</sup></p> <input type="text"/>
<p>WHAT IS 100 MORE THAN 200? <sup>29</sup></p> <input type="text"/>	<p>SUBTRACT 33 FROM 66. <sup>30</sup></p> <input type="text"/>	<p>WHAT IS 8 TIMES 5? <sup>31</sup></p> <input type="text"/>				

WORK SPACE

# APRIL

## MATH QUEST

### DAILY MATH CHALLENGE

<p>A TREE HAS 7 BIRDS, AND 4 MORE ARRIVE. HOW MANY BIRDS ARE THERE NOW?</p> <p>01</p> <input type="text"/>	<p>SUBTRACT 5 FROM 15.</p> <p>02</p> <input type="text"/>	<p>WHAT IS 4 TIMES 4?</p> <p>03</p> <input type="text"/>	<p>ADD 20 AND 8.</p> <p>04</p> <input type="text"/>	<p>WHAT NUMBER COMES BEFORE 40?</p> <p>05</p> <input type="text"/>	<p>COMPLETE THE SEQUENCE: 25, 30, 35, __, __.</p> <p>06</p> <input type="text"/> <input type="text"/>	<p>IF THERE ARE 3 NESTS WITH 2 EGGS IN EACH, HOW MANY EGGS ARE THERE?</p> <p>07</p> <input type="text"/>
<p>WHAT IS 11 MORE THAN 18?</p> <p>08</p> <input type="text"/>	<p>FIND THE MISSING NUMBER: <math>6 + \_\_ = 15</math>.</p> <p>09</p> <input type="text"/>	<p>SUBTRACT 7 FROM 45.</p> <p>10</p> <input type="text"/>	<p>IF YOU PLANT 5 FLOWERS EVERY DAY FOR 6 DAYS, HOW MANY FLOWERS DO YOU PLANT?</p> <p>11</p> <input type="text"/>	<p>WHAT IS 9 TIMES 2?</p> <p>12</p> <input type="text"/>	<p>COUNT BY THREES: 3, 6, 9, __, __.</p> <p>13</p> <input type="text"/> <input type="text"/>	<p>FIND THE SUM OF 14, 5, AND 7.</p> <p>14</p> <input type="text"/>
<p>WHAT IS 8 LESS THAN 22?</p> <p>15</p> <input type="text"/>	<p>IF YOU BAKE 2 PIES EACH WEEK, HOW MANY PIES DO YOU BAKE IN 5 WEEKS?</p> <p>16</p> <input type="text"/>	<p>DOUBLE THE NUMBER 6.</p> <p>17</p> <input type="text"/>	<p>WHAT IS 19 MORE THAN 33?</p> <p>18</p> <input type="text"/>	<p>SUBTRACT 25 FROM 70.</p> <p>19</p> <input type="text"/>	<p>WHAT IS THE VALUE OF THE TENS PLACE IN 54?</p> <p>20</p> <input type="text"/>	<p>COMPLETE THE SEQUENCE: 2, 4, 6, 8, __, __.</p> <p>21</p> <input type="text"/> <input type="text"/>
<p>ADD <math>31 + 12</math>.</p> <p>22</p> <input type="text"/>	<p>IF THERE ARE 40 APPLES AND 18 ARE EATEN, HOW MANY ARE LEFT?</p> <p>23</p> <input type="text"/>	<p>WHAT IS 50 LESS THAN 90?</p> <p>24</p> <input type="text"/>	<p>FIND THE MISSING NUMBER: <math>\_\_ + 8 = 22</math>.</p> <p>25</p> <input type="text"/>	<p>MULTIPLY 6 BY 5.</p> <p>26</p> <input type="text"/>	<p>IF THERE ARE 12 CUPCAKES AND 4 KIDS, HOW MANY CUPCAKES DOES EACH KID GET?</p> <p>27</p> <input type="text"/>	<p>ADD 25 AND 35.</p> <p>28</p> <input type="text"/>
<p>WHAT IS 150 MORE THAN 300?</p> <p>29</p> <input type="text"/>	<p>SUBTRACT 45 FROM 90.</p> <p>30</p> <input type="text"/>					

WORK SPACE

# MAY

## MATH QUEST

### DAILY MATH CHALLENGE

<p>A PICNIC BASKET HAS 8 SANDWICHES, AND 6 ARE EATEN. HOW MANY ARE LEFT?</p> <p>01</p> <input type="text"/>	<p>SUBTRACT 10 FROM 25.</p> <p>02</p> <input type="text"/>	<p>WHAT IS 5 TIMES 3?</p> <p>03</p> <input type="text"/>	<p>ADD 22 AND 11.</p> <p>04</p> <input type="text"/>	<p>WHAT NUMBER COMES AFTER 59?</p> <p>05</p> <input type="text"/>	<p>COMPLETE THE SEQUENCE: 12, 24, 36, __, __.</p> <p>06</p> <input type="text"/> <input type="text"/>	<p>IF THERE ARE 7 KIDS AND EACH GETS 3 ORANGES, HOW MANY ORANGES ARE THERE?</p> <p>07</p> <input type="text"/>
<p>WHAT IS 10 MORE THAN 27?</p> <p>08</p> <input type="text"/>	<p>FIND THE MISSING NUMBER: <math>15 + \_\_ = 40</math>.</p> <p>09</p> <input type="text"/>	<p>SUBTRACT 9 FROM 60.</p> <p>10</p> <input type="text"/>	<p>IF YOU RIDE YOUR BIKE 3 MILES EVERY DAY FOR 7 DAYS, HOW MANY MILES DO YOU RIDE?</p> <p>11</p> <input type="text"/>	<p>WHAT IS 4 TIMES 6?</p> <p>12</p> <input type="text"/>	<p>COUNT BY FOURS: 4, 8, 12, __, __.</p> <p>13</p> <input type="text"/> <input type="text"/>	<p>FIND THE SUM OF 18, 7, AND 5.</p> <p>14</p> <input type="text"/>
<p>WHAT IS 7 LESS THAN 19?</p> <p>15</p> <input type="text"/>	<p>IF YOU COLLECT SEASHELLS EACH WEEK, HOW MANY DO YOU COLLECT IN 3 WEEKS?</p> <p>16</p> <input type="text"/>	<p>DOUBLE THE NUMBER 12.</p> <p>17</p> <input type="text"/>	<p>WHAT IS 24 MORE THAN 19?</p> <p>18</p> <input type="text"/>	<p>SUBTRACT 35 FROM 80.</p> <p>19</p> <input type="text"/>	<p>WHAT IS THE VALUE OF THE TENS PLACE IN 78?</p> <p>20</p> <input type="text"/>	<p>COMPLETE THE SEQUENCE: 10, 20, 30, __, __.</p> <p>21</p> <input type="text"/> <input type="text"/>
<p>ADD <math>44 + 17</math>.</p> <p>22</p> <input type="text"/>	<p>IF THERE ARE 50 BALLOONS AND 22 POP, HOW MANY ARE LEFT?</p> <p>23</p> <input type="text"/>	<p>SUBTRACT 27 FROM 55.</p> <p>24</p> <input type="text"/>	<p>FIND THE MISSING NUMBER: <math>\_\_ + 13 = 32</math>.</p> <p>25</p> <input type="text"/>	<p>MULTIPLY 9 BY 2.</p> <p>26</p> <input type="text"/>	<p>IF THERE ARE 18 SANDWICHES AND 3 KIDS, HOW MANY SANDWICHES DOES EACH KID GET?</p> <p>27</p> <input type="text"/>	<p>ADD 39 AND 21.</p> <p>28</p> <input type="text"/>
<p>WHAT IS 200 MORE THAN 450?</p> <p>29</p> <input type="text"/>	<p>SUBTRACT 50 FROM 120.</p> <p>30</p> <input type="text"/>					

WORK SPACE

# JUNE

## MATH QUEST

### DAILY MATH CHALLENGE

<p>IF THERE ARE 10 BEACH BALLS AND 4 FLOAT AWAY, HOW MANY ARE LEFT?</p> <p>01</p> <input type="text"/>	<p>SUBTRACT 12 FROM 30.</p> <p>02</p> <input type="text"/>	<p>WHAT IS 6 TIMES 3?</p> <p>03</p> <input type="text"/>	<p>ADD 18 AND 9.</p> <p>04</p> <input type="text"/>	<p>WHAT NUMBER COMES BEFORE 100?</p> <p>05</p> <input type="text"/>	<p>COMPLETE THE SEQUENCE: 20, 40, 60, __, __.</p> <p>06</p> <input type="text"/> <input type="text"/>	<p>IF YOU SEE 8 DOLPHINS EVERY DAY FOR 3 DAYS, HOW MANY DOLPHINS DO YOU SEE IN TOTAL?</p> <p>07</p> <input type="text"/>
<p>WHAT IS 15 MORE THAN 30?</p> <p>08</p> <input type="text"/>	<p>FIND THE MISSING NUMBER: <math>20 + \_\_ = 50</math>.</p> <p>09</p> <input type="text"/>	<p>SUBTRACT 14 FROM 70.</p> <p>10</p> <input type="text"/>	<p>COUNT BY FIVES: 5, 10, 15, __, __.</p> <p>11</p> <input type="text"/> <input type="text"/>	<p>IF 4 KIDS SHARE 20 CANDIES EQUALLY, HOW MANY CANDIES DOES EACH KID GET?</p> <p>12</p> <input type="text"/>	<p>WHAT IS 5 TIMES 8?</p> <p>13</p> <input type="text"/>	<p>FIND THE SUM OF 25, 15, AND 10.</p> <p>14</p> <input type="text"/>
<p>WHAT IS 10 LESS THAN 35?</p> <p>15</p> <input type="text"/>	<p>IF YOU RUN 2 MILES EVERY DAY FOR 10 DAYS, HOW MANY MILES DO YOU RUN?</p> <p>16</p> <input type="text"/>	<p>DOUBLE THE NUMBER 15.</p> <p>17</p> <input type="text"/>	<p>WHAT IS 25 MORE THAN 45?</p> <p>18</p> <input type="text"/>	<p>SUBTRACT 50 FROM 90.</p> <p>19</p> <input type="text"/>	<p>COMPLETE THE SEQUENCE: 4, 8, 12, __, __.</p> <p>20</p> <input type="text"/> <input type="text"/>	<p>WHAT IS THE VALUE OF THE TENS PLACE IN 89?</p> <p>21</p> <input type="text"/>
<p>ADD <math>30 + 25</math>.</p> <p>22</p> <input type="text"/>	<p>IF THERE ARE 60 ICE CREAMS AND 24 MELT, HOW MANY ARE LEFT?</p> <p>23</p> <input type="text"/>	<p>SUBTRACT 30 FROM 75.</p> <p>24</p> <input type="text"/>	<p>FIND THE MISSING NUMBER: <math>\_\_ + 10 = 45</math>.</p> <p>25</p> <input type="text"/>	<p>MULTIPLY 7 BY 4.</p> <p>26</p> <input type="text"/>	<p>IF THERE ARE 24 CHAIRS AND 6 TABLES, HOW MANY CHAIRS ARE AT EACH TABLE?</p> <p>27</p> <input type="text"/>	<p>ADD 50 AND 40.</p> <p>28</p> <input type="text"/>
<p>WHAT IS 500 MORE THAN 300?</p> <p>29</p> <input type="text"/>	<p>SUBTRACT 100 FROM 300.</p> <p>30</p> <input type="text"/>					

WORK SPACE

# JULY

## MATH QUEST

### DAILY MATH CHALLENGE

<p>IF THERE ARE 13 STRIPES ON A FLAG AND 7 ARE RED, HOW MANY ARE NOT RED? <sup>01</sup></p> <input type="text"/>	<p>SUBTRACT 15 FROM 25. <sup>02</sup></p> <input type="text"/>	<p>WHAT IS 9 TIMES 2? <sup>03</sup></p> <input type="text"/>	<p>ADD 33 AND 12. <sup>04</sup></p> <input type="text"/>	<p>WHAT NUMBER COMES AFTER 89? <sup>05</sup></p> <input type="text"/>	<p>COMPLETE THE SEQUENCE: 5, 10, 15, __, __. <sup>06</sup></p> <input type="text"/> <input type="text"/>	<p>IF YOU EAT 4 HOT DOGS EVERY DAY FOR 3 DAYS, HOW MANY HOT DOGS DO YOU EAT? <sup>07</sup></p> <input type="text"/>
<p>WHAT IS 20 MORE THAN 50? <sup>08</sup></p> <input type="text"/>	<p>FIND THE MISSING NUMBER: <math>30 + \_\_ = 75</math>. <sup>09</sup></p> <input type="text"/>	<p>SUBTRACT 25 FROM 100. <sup>10</sup></p> <input type="text"/>	<p>IF 8 KIDS SHARE 32 SPARKLERS EQUALLY, HOW MANY SPARKLERS DOES EACH KID GET? <sup>11</sup></p> <input type="text"/>	<p>WHAT IS 3 TIMES 12? <sup>12</sup></p> <input type="text"/>	<p>COUNT BY TWOS: 2, 4, 6, __, __. <sup>13</sup></p> <input type="text"/> <input type="text"/>	<p>FIND THE SUM OF 40, 15, AND 5. <sup>14</sup></p> <input type="text"/>
<p>WHAT IS 18 LESS THAN 60? <sup>15</sup></p> <input type="text"/>	<p>IF YOU LIGHT 2 FIREWORKS EVERY HOUR FOR 5 HOURS, HOW MANY FIREWORKS DO YOU LIGHT? <sup>16</sup></p> <input type="text"/>	<p>DOUBLE THE NUMBER 16. <sup>17</sup></p> <input type="text"/>	<p>WHAT IS 35 MORE THAN 25? <sup>18</sup></p> <input type="text"/>	<p>SUBTRACT 40 FROM 75. <sup>19</sup></p> <input type="text"/>	<p>WHAT IS THE VALUE OF THE TENS PLACE IN 91? <sup>20</sup></p> <input type="text"/>	<p>COMPLETE THE SEQUENCE: 10, 15, 20, __, __. <sup>21</sup></p> <input type="text"/> <input type="text"/>
<p>ADD <math>55 + 34</math>. <sup>22</sup></p> <input type="text"/>	<p>IF THERE ARE 48 POPSICLES AND 20 MELT, HOW MANY ARE LEFT? <sup>23</sup></p> <input type="text"/>	<p>SUBTRACT 45 FROM 90. <sup>24</sup></p> <input type="text"/>	<p>FIND THE MISSING NUMBER: <math>\_\_ + 8 = 60</math>. <sup>25</sup></p> <input type="text"/>	<p>MULTIPLY 6 BY 6. <sup>26</sup></p> <input type="text"/>	<p>IF THERE ARE 18 BURGERS AND 3 GRILLS, HOW MANY BURGERS ARE ON EACH GRILL? <sup>27</sup></p> <input type="text"/>	<p>ADD 44 AND 33. <sup>28</sup></p> <input type="text"/>
<p>WHAT IS 600 MORE THAN 400? <sup>29</sup></p> <input type="text"/>	<p>SUBTRACT 200 FROM 500. <sup>30</sup></p> <input type="text"/>					

WORK SPACE



# AUGUST

## MATH QUEST

### DAILY MATH CHALLENGE

<p>A PENCIL BOX HAS 10 PENCILS, AND 4 ARE USED. HOW MANY ARE LEFT?</p> <p>01</p> <input type="text"/>	<p>SUBTRACT 9 FROM 20.</p> <p>02</p> <input type="text"/>	<p>WHAT IS 8 TIMES 3?</p> <p>03</p> <input type="text"/>	<p>ADD 25 AND 18.</p> <p>04</p> <input type="text"/>	<p>WHAT NUMBER COMES BEFORE 75?</p> <p>05</p> <input type="text"/>	<p>COMPLETE THE SEQUENCE: 15, 30, 45, __, __.</p> <p>06</p> <input type="text"/> <input type="text"/>	<p>IF THERE ARE 6 NOTEBOOKS AND 4 KIDS, HOW MANY NOTEBOOKS DOES EACH KID GET?</p> <p>07</p> <input type="text"/>
<p>WHAT IS 10 MORE THAN 35?</p> <p>08</p> <input type="text"/>	<p>FIND THE MISSING NUMBER: <math>40 + \_\_ = 80</math>.</p> <p>09</p> <input type="text"/>	<p>SUBTRACT 20 FROM 90.</p> <p>10</p> <input type="text"/>	<p>IF 5 KIDS EACH BRING 3 APPLES TO SCHOOL, HOW MANY APPLES ARE THERE IN TOTAL?</p> <p>11</p> <input type="text"/>	<p>WHAT IS 7 TIMES 4?</p> <p>12</p> <input type="text"/>	<p>COUNT BY FIVES: 5, 10, 15, __, __.</p> <p>13</p> <input type="text"/> <input type="text"/>	<p>FIND THE SUM OF 22, 18, AND 15.</p> <p>14</p> <input type="text"/>
<p>WHAT IS 12 LESS THAN 55?</p> <p>15</p> <input type="text"/>	<p>IF YOU SHARPEN 3 PENCILS EVERY DAY FOR 5 DAYS, HOW MANY PENCILS DO YOU SHARPEN?</p> <p>16</p> <input type="text"/>	<p>DOUBLE THE NUMBER 14.</p> <p>17</p> <input type="text"/>	<p>WHAT IS 28 MORE THAN 15?</p> <p>18</p> <input type="text"/>	<p>SUBTRACT 50 FROM 100.</p> <p>19</p> <input type="text"/>	<p>WHAT IS THE VALUE OF THE TENS PLACE IN 84?</p> <p>20</p> <input type="text"/>	<p>COMPLETE THE SEQUENCE: 6, 12, 18, __, __.</p> <p>21</p> <input type="text"/> <input type="text"/>
<p>ADD <math>47 + 29</math>.</p> <p>22</p> <input type="text"/>	<p>IF THERE ARE 64 BOOKS AND 20 ARE BORROWED, HOW MANY ARE LEFT?</p> <p>23</p> <input type="text"/>	<p>MULTIPLY 9 BY 7.</p> <p>24</p> <input type="text"/>	<p>ADD 18 AND 35.</p> <p>25</p> <input type="text"/>	<p>SUBTRACT 28 FROM 100.</p> <p>26</p> <input type="text"/>	<p>IF YOU WRITE 5 SENTENCES EACH DAY FOR 4 DAYS, HOW MANY SENTENCES DO YOU WRITE?</p> <p>27</p> <input type="text"/>	<p>DOUBLE THE NUMBER 23.</p> <p>28</p> <input type="text"/>
<p>WHAT IS 10 LESS THAN 80?</p> <p>29</p> <input type="text"/>	<p>FIND THE SUM OF 25, 15, AND 40.</p> <p>30</p> <input type="text"/>	<p>COMPLETE THE SEQUENCE: 4, 8, 12, __, __.</p> <p>31</p> <input type="text"/> <input type="text"/>				

WORK SPACE

# SEPTEMBER

## MATH QUEST

### DAILY MATH CHALLENGE

<p>IF A TREE HAS 36 LEAVES AND 12 FALL, HOW MANY ARE LEFT? <sup>01</sup></p> <input type="text"/>	<p>SUBTRACT 8 FROM 15. <sup>02</sup></p> <input type="text"/>	<p>WHAT IS 5 TIMES 3? <sup>03</sup></p> <input type="text"/>	<p>ADD 19 AND 14. <sup>04</sup></p> <input type="text"/>	<p>WHAT NUMBER COMES AFTER 49? <sup>05</sup></p> <input type="text"/>	<p>COMPLETE THE SEQUENCE: 3, 6, 9, __, __. <sup>06</sup></p> <input type="text"/> <input type="text"/>	<p>IF 4 PUMPKINS ARE A PATCH AND 2 ARE PICKED EACH DAY FOR 3 DAYS, HOW MANY PUMPKINS ARE PICKED IN TOTAL? <sup>07</sup></p> <input type="text"/>
<p>WHAT IS 25 MORE THAN 10? <sup>08</sup></p> <input type="text"/>	<p>FIND THE MISSING NUMBER: <math>50 + \_\_ = 100</math>. <sup>09</sup></p> <input type="text"/>	<p>SUBTRACT 35 FROM 85. <sup>10</sup></p> <input type="text"/>	<p>COUNT BY THREES: 3, 6, 9, __, __. <sup>11</sup></p> <input type="text"/> <input type="text"/>	<p>IF 6 KIDS EACH COLLECT 4 ACORNS, HOW MANY ACORNS ARE COLLECTED? <sup>12</sup></p> <input type="text"/>	<p>WHAT IS 9 TIMES 5? <sup>13</sup></p> <input type="text"/>	<p>FIND THE SUM OF 12, 8, AND 20. <sup>14</sup></p> <input type="text"/>
<p>WHAT IS 24 LESS THAN 50? <sup>15</sup></p> <input type="text"/>	<p>IF YOU BAKE 3 PIES EACH DAY FOR 5 DAYS, HOW MANY PIES DO YOU BAKE? <sup>16</sup></p> <input type="text"/>	<p>DOUBLE THE NUMBER 18. <sup>17</sup></p> <input type="text"/>	<p>WHAT IS 32 MORE THAN 24? <sup>18</sup></p> <input type="text"/>	<p>SUBTRACT 60 FROM 120. <sup>19</sup></p> <input type="text"/>	<p>COMPLETE THE SEQUENCE: 2, 4, 8, __, __. <sup>20</sup></p> <input type="text"/> <input type="text"/>	<p>WHAT IS THE VALUE OF THE TENS PLACE IN 76? <sup>21</sup></p> <input type="text"/>
<p>ADD <math>67 + 22</math>. <sup>22</sup></p> <input type="text"/>	<p>IF THERE ARE 50 APPLES AND 15 ARE EATEN, HOW MANY ARE LEFT? <sup>23</sup></p> <input type="text"/>	<p>SUBTRACT 45 FROM 90. <sup>24</sup></p> <input type="text"/>	<p>WHAT IS 11 TIMES 3? <sup>25</sup></p> <input type="text"/>	<p>ADD 42 AND 29. <sup>26</sup></p> <input type="text"/>	<p>IF A SQUIRREL GATHERS 8 ACORNS EACH DAY FOR 6 DAYS, HOW MANY ACORNS DOES IT GATHER? <sup>27</sup></p> <input type="text"/>	<p>DOUBLE THE NUMBER 12. <sup>28</sup></p> <input type="text"/>
<p>WHAT IS 30 MORE THAN 60? <sup>29</sup></p> <input type="text"/>	<p>FIND THE MISSING NUMBER: <math>\_\_ + 50 = 100</math>. <sup>30</sup></p> <input type="text"/>					

WORK SPACE

# OCTOBER

## MATH QUEST

### DAILY MATH CHALLENGE

<p>IF THERE ARE 20 CANDIES IN A BAG AND 7 ARE EATEN, HOW MANY ARE LEFT?</p> <p>01</p> <input type="text"/>	<p>SUBTRACT 13 FROM 40.</p> <p>02</p> <input type="text"/>	<p>WHAT IS 6 TIMES 3?</p> <p>03</p> <input type="text"/>	<p>ADD 28 AND 11.</p> <p>04</p> <input type="text"/>	<p>WHAT NUMBER COMES BEFORE 31?</p> <p>05</p> <input type="text"/>	<p>COMPLETE THE SEQUENCE: 10, 20, 30, __, __.</p> <p>06</p> <input type="text"/> <input type="text"/>	<p>IF YOU CARVE 1 PUMPKIN EVERY DAY FOR 4 DAYS, HOW MANY PUMPKINS DO YOU CARVE?</p> <p>07</p> <input type="text"/>
<p>WHAT IS 50 MORE THAN 25?</p> <p>08</p> <input type="text"/>	<p>FIND THE MISSING NUMBER: <math>100 + \_\_ = 200</math>.</p> <p>09</p> <input type="text"/>	<p>SUBTRACT 15 FROM 90.</p> <p>10</p> <input type="text"/>	<p>IF 8 KIDS EACH BRING 2 GHOST DECORATIONS, HOW MANY DECORATIONS ARE THERE?</p> <p>11</p> <input type="text"/>	<p>WHAT IS 7 TIMES 6?</p> <p>12</p> <input type="text"/>	<p>COUNT BY FOURS: 4, 8, 12, __, __.</p> <p>13</p> <input type="text"/> <input type="text"/>	<p>FIND THE SUM OF 35, 15, AND 10.</p> <p>14</p> <input type="text"/>
<p>WHAT IS 22 LESS THAN 80?</p> <p>15</p> <input type="text"/>	<p>IF YOU LIGHT 5 CANDLES EACH DAY FOR 6 DAYS, HOW MANY CANDLES DO YOU LIGHT?</p> <p>16</p> <input type="text"/>	<p>DOUBLE THE NUMBER 21.</p> <p>17</p> <input type="text"/>	<p>WHAT IS 45 MORE THAN 30?</p> <p>18</p> <input type="text"/>	<p>SUBTRACT 50 FROM 150.</p> <p>19</p> <input type="text"/>	<p>WHAT IS THE VALUE OF THE TENS PLACE IN 97?</p> <p>20</p> <input type="text"/>	<p>COMPLETE THE SEQUENCE: 50, 55, 60, __, __.</p> <p>21</p> <input type="text"/> <input type="text"/>
<p>ADD <math>76 + 18</math>.</p> <p>22</p> <input type="text"/>	<p>IF THERE ARE 40 SPIDERS IN A WEB AND 10 CRAWL AWAY, HOW MANY ARE LEFT?</p> <p>23</p> <input type="text"/>	<p>SUBTRACT 18 FROM 40.</p> <p>24</p> <input type="text"/>	<p>MULTIPLY 4 BY 9.</p> <p>25</p> <input type="text"/>	<p>ADD 55 AND 24</p> <p>26</p> <input type="text"/>	<p>IF YOU COLLECT TREATS EACH NIGHT FOR 5 NIGHTS, HOW MANY TREATS DO YOU COLLECT?</p> <p>27</p> <input type="text"/>	<p>DOUBLE THE NUMBER 19.</p> <p>28</p> <input type="text"/>
<p>WHAT IS 15 LESS THAN 50?</p> <p>29</p> <input type="text"/>	<p>FIND THE SUM OF 45, 25, AND 15.</p> <p>30</p> <input type="text"/>	<p>COMPLETE THE SEQUENCE: 100, 90, 80, __, __.</p> <p>31</p> <input type="text"/> <input type="text"/>				

WORK SPACE

# NOVEMBER

## MATH QUEST

### DAILY MATH CHALLENGE

<p>01 IF A TURKEY WEIGHS 18 POUNDS AND 6 POUNDS ARE EATEN, HOW MUCH IS LEFT?</p> <input type="text"/>	<p>02 SUBTRACT 14 FROM 50.</p> <input type="text"/>	<p>03 WHAT IS 4 TIMES 7?</p> <input type="text"/>	<p>04 ADD 16 AND 23.</p> <input type="text"/>	<p>05 WHAT NUMBER COMES AFTER 68?</p> <input type="text"/>	<p>06 COMPLETE THE SEQUENCE: 12, 24, 36, __, __.</p> <input type="text"/> <input type="text"/>	<p>07 IF 5 PIES ARE BAKED EACH DAY FOR 3 DAYS, HOW MANY PIES ARE BAKED?</p> <input type="text"/>
<p>08 WHAT IS 20 MORE THAN 55?</p> <input type="text"/>	<p>09 FIND THE MISSING NUMBER: <math>25 + \_\_ = 100</math>.</p> <input type="text"/>	<p>10 SUBTRACT 30 FROM 70.</p> <input type="text"/>	<p>11 IF 3 FAMILIES EACH BRING 12 DISHES TO A POTLUCK, HOW MANY DISHES ARE THERE?</p> <input type="text"/>	<p>12 WHAT IS 8 TIMES 8?</p> <input type="text"/>	<p>13 COUNT BY SIXES: 6, 12, 18, __, __.</p> <input type="text"/> <input type="text"/>	<p>14 FIND THE SUM OF 40, 30, AND 25.</p> <input type="text"/>
<p>15 WHAT IS 19 LESS THAN 70?</p> <input type="text"/>	<p>16 IF YOU PICK 6 LEAVES EACH DAY FOR 5 DAYS, HOW MANY LEAVES DO YOU PICK?</p> <input type="text"/>	<p>17 DOUBLE THE NUMBER 25.</p> <input type="text"/>	<p>18 WHAT IS 62 MORE THAN 35?</p> <input type="text"/>	<p>19 SUBTRACT 50 FROM 150.</p> <input type="text"/>	<p>20 SUBTRACT 25 FROM 100.</p> <input type="text"/>	<p>21 COMPLETE THE SEQUENCE: 11, 22, 33, __, __.</p> <input type="text"/> <input type="text"/>
<p>22 WHAT IS THE VALUE OF THE TENS PLACE IN 85?</p> <input type="text"/>	<p>23 ADD <math>63 + 29</math>.</p> <input type="text"/>	<p>24 IF THERE ARE 54 CRANBERRIES IN A BOWL AND 18 ARE EATEN, HOW MANY ARE LEFT?</p> <input type="text"/>	<p>25 MULTIPLY 5 BY 8.</p> <input type="text"/>	<p>26 ADD 26 AND 33.</p> <input type="text"/>	<p>27 SUBTRACT 19 FROM 60.</p> <input type="text"/>	<p>28 IF YOU COOK 4 DISHES EACH DAY FOR 7 DAYS, HOW MANY DISHES DO YOU COOK?</p> <input type="text"/>
<p>29 DOUBLE THE NUMBER 22.</p> <input type="text"/>	<p>30 WHAT IS 35 MORE THAN 40?</p> <input type="text"/>	<p>31 FIND THE MISSING NUMBER: <math>120 + \_\_ = 150</math>.</p> <input type="text"/>				

WORK SPACE

# DECEMBER

## MATH QUEST

### DAILY MATH CHALLENGE

<p>IF THERE ARE 24 ORNAMENTS AND 8 FALL, HOW MANY ARE LEFT? <sup>01</sup></p> <input type="text"/>	<p>SUBTRACT 22 FROM 60. <sup>02</sup></p> <input type="text"/>	<p>WHAT IS 9 TIMES 4? <sup>03</sup></p> <input type="text"/>	<p>ADD 45 AND 16. <sup>04</sup></p> <input type="text"/>	<p>WHAT NUMBER COMES BEFORE 100? <sup>05</sup></p> <input type="text"/>	<p>COMPLETE THE SEQUENCE: 25, 50, 75, __, __. <sup>06</sup></p> <input type="text"/> <input type="text"/>	<p>IF 10 CANDY CANES ARE SHARED EQUALLY AMONG 5 KIDS, HOW MANY DOES EACH GET? <sup>07</sup></p> <input type="text"/>
<p>WHAT IS 40 MORE THAN 30? <sup>08</sup></p> <input type="text"/>	<p>FIND THE MISSING NUMBER: <math>150 + \_\_ = 200</math>. <sup>09</sup></p> <input type="text"/>	<p>SUBTRACT 80 FROM 120. <sup>10</sup></p> <input type="text"/>	<p>COUNT BY SEVENS: 7, 14, 21, __, __. <sup>11</sup></p> <input type="text"/> <input type="text"/>	<p>IF 4 FAMILIES EACH HANG 6 WREATHS, HOW MANY WREATHS ARE HUNG? <sup>12</sup></p> <input type="text"/>	<p>WHAT IS 5 TIMES 9? <sup>13</sup></p> <input type="text"/>	<p>FIND THE SUM OF 33, 27, AND 15. <sup>14</sup></p> <input type="text"/>
<p>WHAT IS 14 LESS THAN 50? <sup>15</sup></p> <input type="text"/>	<p>IF YOU LIGHT 3 CANDLES EACH NIGHT FOR 8 NIGHTS, HOW MANY CANDLES ARE LIT? <sup>16</sup></p> <input type="text"/>	<p>DOUBLE THE NUMBER 19. <sup>17</sup></p> <input type="text"/>	<p>WHAT IS 28 MORE THAN 47? <sup>18</sup></p> <input type="text"/>	<p>SUBTRACT 60 FROM 140. <sup>19</sup></p> <input type="text"/>	<p>COMPLETE THE SEQUENCE: 13, 26, 39, __, __. <sup>20</sup></p> <input type="text"/> <input type="text"/>	<p>WHAT IS THE VALUE OF THE TENS PLACE IN 92? <sup>21</sup></p> <input type="text"/>
<p>ADD <math>84 + 36</math>. <sup>22</sup></p> <input type="text"/>	<p>IF THERE ARE 100 COOKIES AND 34 ARE EATEN, HOW MANY ARE LEFT? <sup>23</sup></p> <input type="text"/>	<p>SUBTRACT 33 FROM 70. <sup>24</sup></p> <input type="text"/>	<p>MULTIPLY 3 BY 11. <sup>25</sup></p> <input type="text"/>	<p>ADD 66 AND 27. <sup>26</sup></p> <input type="text"/>	<p>IF 12 STOCKINGS ARE HUNG AND 5 ARE FILLED, HOW MANY ARE LEFT EMPTY? <sup>27</sup></p> <input type="text"/>	<p>DOUBLE THE NUMBER 24. <sup>28</sup></p> <input type="text"/>
<p>WHAT IS 25 LESS THAN 100? <sup>29</sup></p> <input type="text"/>	<p>FIND THE SUM OF 50, 40, AND 10. <sup>30</sup></p> <input type="text"/>	<p>COMPLETE THE SEQUENCE: 60, 70, 80, __, __. <sup>31</sup></p> <input type="text"/> <input type="text"/>				

WORK SPACE

# DAILY MATH CHALLENGE ANSWERS

## JANUARY

1. If it snows for 24 hours in a row, how many days is that? [2 days]
2. What is  $15 - 7$ ? [8]
3. Double the number 4. [8]
4. A sled costs 20 coins, and you have 8 coins. How many more coins do you need? [12 coins]
5. What comes after 29 in counting? [30]
6. Complete the sequence: 10, 20, 30, \_\_, \_\_. [40, 50]
7. If there are 2 snowmen, and each has 3 buttons, how many buttons are there in total? [6 buttons]
8. What is  $10 + 5$ ? [15]
9. Find the missing number:  $7 + \_ = 14$ . [7]
10. What is 3 more than 11? [14]
11. If there are 18 snowflakes on a page, how many will there be if 2 more fall? [20 snowflakes]
12. Subtract 9 from 20. [11]
13. Count by twos: 2, 4, 6, \_\_, \_\_. [8, 10]
14. A penguin slides 5 yards, and another slides 7 yards. How far do they slide together? [12 yards]
15. What is 6 less than 12? [6]
16. If you drink 2 cups of cocoa every day, how many cups do you drink in 6 days? [12 cups]
17. Double the number 7. [14]
18. What is 9 more than 13? [22]
19. Find the sum of 8, 2, and 4. [14]
20. If there are 25 icicles and 8 melt, how many are left? [17 icicles]
21. Complete the sequence: 5, 10, 15, \_\_, \_\_. [20, 25]
22. Subtract 13 from 30. [17]
23. What is the value of the tens place in 23? [20]
24. Add  $11 + 9$ . [20]
25. A winter scarf has 12 stripes. If 4 are red, how many are not red? [8 stripes]
26. What is 10 less than 50? [40]
27. Find the missing number:  $\_ + 6 = 15$ . [9]
28. What is 3 times 4? [12]
29. There are 6 mittens in a drawer. How many pairs of mittens are there? [3 pairs]
30. Add 14 and 8. [22]
31. What is 20 more than 40? [60]

## FEBRUARY

1. If you give 3 candies to 5 friends, how many candies do you give away? [15 candies]
2. Subtract 8 from 16. [8]
3. What is double 6? [12]
4. A heart necklace costs 24 coins. If you have 15, how many more do you need? [9 coins]
5. Add  $12 + 9$ . [21]
6. Complete the sequence: 2, 4, 6, \_\_, \_\_. [8, 10]
7. If a box has 18 chocolates and you eat 5, how many are left? [13 chocolates]
8. What is 7 more than 19? [26]
9. Find the missing number:  $5 + \_ = 14$ . [9]
10. Count by fives: 5, 10, 15, \_\_, \_\_. [20, 25]
11. Subtract 10 from 30. [20]
12. A bouquet has 6 roses and 7 tulips. How many flowers are there in total? [13 flowers]
13. What is 4 times 3? [12]
14. Find the sum of 9, 8, and 3. [20]
15. What is 12 less than 25? [13]
16. If you read 2 books every week, how many books do you read in 4 weeks? [8 books]
17. Double the number 8. [16]
18. What is 6 more than 21? [27]
19. Subtract 15 from 40. [25]
20. Complete the sequence: 1, 3, 5, \_\_, \_\_. [7, 9]
21. What is the value of the tens place in 42? [40]
22. Add  $17 + 6$ . [23]
23. If there are 28 valentines in a box, and you use 11, how many are left? [17 valentines]
24. What is 20 less than 60? [40]
25. Find the missing number:  $\_ + 7 = 20$ . [13]
26. Multiply 5 by 4. [20]
27. If there are 14 cookies and 7 kids, how many cookies does each kid get? [2 cookies]
28. What is 50 more than 25? [75]

## MARCH

1. A garden has 6 tulips, and 5 more bloom. How many are there now? [11 tulips]
2. Subtract 12 from 20. [8]
3. What is 3 times 3? [9]
4. Add 15 and 7. [22]
5. What number comes after 49? [50]
6. Complete the sequence: 10, 15, 20, \_\_, \_\_. [25, 30]
7. If there are 5 flowers in each pot, and there are 4 pots, how many flowers are there in total? [20 flowers]
8. What is 9 more than 24? [33]
9. Find the missing number:  $10 + \_ = 25$ . [15]
10. Subtract 8 from 50. [42]
11. Count by tens: 10, 20, 30, \_\_, \_\_. [40, 50]
12. If 3 kids each find 4 eggs, how many eggs are there? [12 eggs]
13. What is 6 times 2? [12]
14. Find the sum of 11, 7, and 3. [21]
15. What is 5 less than 18? [13]
16. If you pick 2 apples every day, how many apples do you pick in 7 days? [14 apples]
17. Double the number 9. [18]
18. What is 15 more than 28? [43]
19. Subtract 20 from 50. [30]
20. Complete the sequence: 3, 6, 9, \_\_, \_\_. [12, 15]
21. What is the value of the tens place in 65? [6]
22. Add  $21 + 8$ . [29]
23. If there are 36 carrots and 14 are eaten, how many are left? [22 carrots]
24. What is 40 less than 100? [60]
25. Find the missing number:  $\_ + 9 = 30$ . [21]
26. Multiply 7 by 3. [21]
27. If there are 15 frogs and they jump into 3 ponds equally, how many frogs are in each pond? [5 frogs]
28. Add 27 and 13. [40]
29. What is 100 more than 200? [300]
30. Subtract 33 from 66. [33]
31. What is 8 times 5? [40]

# DAILY MATH CHALLENGE ANSWERS

## APRIL

1. A tree has 7 birds, and 4 more arrive. How many birds are there now? [11 birds]
2. Subtract 5 from 15. [10]
3. What is 4 times 4? [16]
4. Add 20 and 8. [28]
5. What number comes before 40? [39]
6. Complete the sequence: 25, 30, 35, \_\_, \_\_. [40, 45]
7. If there are 3 nests with 2 eggs in each, how many eggs are there? [6 eggs]
8. What is 11 more than 18? [29]
9. Find the missing number:  $6 + \_ = 15$ . [9]
10. Subtract 7 from 45. [38]
11. If you plant 5 flowers every day for 6 days, how many flowers do you plant? [30 flowers]
12. What is 9 times 2? [18]
13. Count by threes: 3, 6, 9, \_\_, \_\_. [12, 15]
14. Find the sum of 14, 5, and 7. [26]
15. What is 8 less than 22? [14]
16. If you bake 2 pies each week, how many pies do you bake in 5 weeks? [10 pies]
17. Double the number 6. [12]
18. What is 19 more than 33? [52]
19. Subtract 25 from 70. [45]
20. What is the value of the tens place in 54? [5]
21. Complete the sequence: 2, 4, 6, 8, \_\_. [10]
22. Add  $31 + 12$ . [43]
23. If there are 40 apples and 18 are eaten, how many are left? [22 apples]
24. What is 50 less than 90? [40]
25. Find the missing number:  $\_ + 8 = 22$ . [14]
26. Multiply 6 by 5. [30]
27. If there are 12 cupcakes and 4 kids, how many cupcakes does each kid get? [3 cupcakes]
28. Add 25 and 35. [60]
29. What is 150 more than 300? [450]
30. Subtract 45 from 90. [45]

## MAY

1. A picnic basket has 8 sandwiches, and 6 are eaten. How many are left? [2 sandwiches]
2. Subtract 10 from 25. [15]
3. What is 5 times 3? [15]
4. Add 22 and 11. [33]
5. What number comes after 59? [60]
6. Complete the sequence: 12, 24, 36, \_\_, \_\_. [48, 60]
7. If there are 7 kids and each gets 3 oranges, how many oranges are there? [21 oranges]
8. What is 10 more than 27? [37]
9. Find the missing number:  $15 + \_ = 40$ . [25]
10. Subtract 9 from 60. [51]
11. If you ride your bike 3 miles every day for 7 days, how many miles do you ride? [21 miles]
12. What is 4 times 6? [24]
13. Count by fours: 4, 8, 12, \_\_, \_\_. [16, 20]
14. Find the sum of 18, 7, and 5. [30]
15. What is 7 less than 19? [12]
16. If you collect 10 seashells each week, how many do you collect in 3 weeks? [30 seashells]
17. Double the number 12. [24]
18. What is 24 more than 19? [43]
19. Subtract 35 from 80. [45]
20. What is the value of the tens place in 78? [7]
21. Complete the sequence: 10, 20, 30, \_\_, \_\_. [40, 50]
22. Add  $44 + 17$ . [61]
23. If there are 50 balloons and 22 pop, how many are left? [28 balloons]
24. Subtract 27 from 55. [28]
25. Find the missing number:  $\_ + 13 = 32$ . [19]
26. Multiply 9 by 2. [18]
27. If there are 18 sandwiches and 3 kids, how many sandwiches does each kid get? [6 sandwiches]
28. Add 39 and 21. [60]
29. What is 200 more than 450? [650]
30. Subtract 50 from 120. [70]

## JUNE

1. If there are 10 beach balls and 4 float away, how many are left? [6 beach balls]
2. Subtract 12 from 30. [18]
3. What is 6 times 3? [18]
4. Add 18 and 9. [27]
5. What number comes before 100? [99]
6. Complete the sequence: 20, 40, 60, \_\_, \_\_. [80, 100]
7. If you see 8 dolphins every day for 3 days, how many dolphins do you see in total? [24 dolphins]
8. What is 15 more than 30? [45]
9. Find the missing number:  $20 + \_ = 50$ . [30]
10. Subtract 14 from 70. [56]
11. Count by fives: 5, 10, 15, \_\_, \_\_. [20, 25]
12. If 4 kids share 20 candies equally, how many candies does each kid get? [5 candies]
13. What is 5 times 8? [40]
14. Find the sum of 25, 15, and 10. [50]
15. What is 10 less than 35? [25]
16. If you run 2 miles every day for 10 days, how many miles do you run? [20 miles]
17. Double the number 15. [30]
18. What is 25 more than 45? [70]
19. Subtract 50 from 90. [40]
20. Complete the sequence: 4, 8, 12, \_\_, \_\_. [16, 20]
21. What is the value of the tens place in 89? [80]
22. Add  $30 + 25$ . [55]
23. If there are 60 ice creams and 24 melt, how many are left? [36 ice creams]
24. Subtract 30 from 75. [45]
25. Find the missing number:  $\_ + 10 = 45$ . [35]
26. Multiply 7 by 4. [28]
27. If there are 24 chairs and 6 tables, how many chairs are at each table? [4 chairs]
28. Add 50 and 40. [90]
29. What is 500 more than 300? [800]
30. Subtract 100 from 300. [200]



# DAILY MATH CHALLENGE ANSWERS

## JULY

1. If there are 13 stripes on a flag and 7 are red, how many are not red? [6 stripes]
2. Subtract 15 from 25. [10]
3. What is 9 times 2? [18]
4. Add 33 and 12. [45]
5. What number comes after 89? [90]
6. Complete the sequence: 5, 10, 15, \_\_, \_\_. [20, 25]
7. If you eat 4 hot dogs every day for 3 days, how many hot dogs do you eat? [12 hot dogs]
8. What is 20 more than 50? [70]
9. Find the missing number:  $30 + \_ = 75$ . [45]
10. Subtract 25 from 100. [75]
11. If 8 kids share 32 sparklers equally, how many sparklers does each kid get? [4 sparklers]
12. What is 3 times 12? [36]
13. Count by twos: 2, 4, 6, \_\_, \_\_. [8, 10]
14. Find the sum of 40, 15, and 5. [60]
15. What is 18 less than 60? [42]
16. If you light 2 fireworks every hour for 5 hours, how many fireworks do you light? [10 fireworks]
17. Double the number 16. [32]
18. What is 35 more than 25? [60]
19. Subtract 40 from 75. [35]
20. What is the value of the tens place in 91? [90]
21. Complete the sequence: 10, 15, 20, \_\_, \_\_. [25, 30]
22. Add  $55 + 34$ . [89]
23. If there are 48 popsicles and 20 melt, how many are left? [28 popsicles]
24. Subtract 45 from 90. [45]
25. Find the missing number:  $\_ + 8 = 60$ . [52]
26. Multiply 6 by 6. [36]
27. If there are 18 burgers and 3 grills, how many burgers are on each grill? [6 burgers]
28. Add 44 and 33. [77]
29. What is 600 more than 400? [1,000]
30. Subtract 200 from 500. [300]

## AUGUST

1. A pencil box has 10 pencils, and 4 are used. How many are left? [6 pencils]
2. Subtract 9 from 20. [11]
3. What is 8 times 3? [24]
4. Add 25 and 18. [43]
5. What number comes before 75? [74]
6. Complete the sequence: 15, 30, 45, \_\_, \_\_. [60, 75]
7. If there are 6 notebooks and 4 kids, how many notebooks does each kid get? [1.5 notebooks]
8. What is 10 more than 35? [45]
9. Find the missing number:  $40 + \_ = 80$ . [40]
10. Subtract 20 from 90. [70]
11. If 5 kids each bring 3 apples to school, how many apples are there in total? [15 apples]
12. What is 7 times 4? [28]
13. Count by fives: 5, 10, 15, \_\_, \_\_. [20, 25]
14. Find the sum of 22, 18, and 15. [55]
15. What is 12 less than 55? [43]
16. If you sharpen 3 pencils every day for 5 days, how many pencils do you sharpen? [15 pencils]
17. Double the number 14. [28]
18. What is 28 more than 15? [43]
19. Subtract 50 from 100. [50]
20. What is the value of the tens place in 84? [8]
21. Complete the sequence: 6, 12, 18, \_\_, \_\_. [24, 30]
22. Add  $47 + 29$ . [76]
23. If there are 64 books and 20 are borrowed, how many are left? [44 books]
24. Multiply 9 by 7. [63]
25. Add 18 and 35. [53]
26. Subtract 28 from 100. [72]
27. If you write 5 sentences each day for 4 days, how many sentences do you write? [20 sentences]
28. Double the number 23. [46]
29. What is 10 less than 80? [70]
30. Find the sum of 25, 15, and 40. [80]
31. Complete the sequence: 4, 8, 12, \_\_, \_\_. [16, 20]

## SEPTEMBER

1. If a tree has 36 leaves and 12 fall, how many are left? [24 leaves]
2. Subtract 8 from 15. [7]
3. What is 5 times 3? [15]
4. Add 19 and 14. [33]
5. What number comes after 49? [50]
6. Complete the sequence: 3, 6, 9, \_\_, \_\_. [12, 15]
7. If 4 pumpkins are in a patch and 2 are picked each day for 3 days, how many pumpkins are picked in total? [6 pumpkins]
8. What is 25 more than 10? [35]
9. Find the missing number:  $50 + \_ = 100$ . [50]
10. Subtract 35 from 85. [50]
11. Count by threes: 3, 6, 9, \_\_, \_\_. [12, 15]
12. If 6 kids each collect 4 acorns, how many acorns are collected? [24 acorns]
13. What is 9 times 5? [45]
14. Find the sum of 12, 8, and 20. [40]
15. What is 24 less than 50? [26]
16. If you bake 3 pies each day for 5 days, how many pies do you bake? [15 pies]
17. Double the number 18. [36]
18. What is 32 more than 24? [56]
19. Subtract 60 from 120. [60]
20. Complete the sequence: 2, 4, 8, \_\_, \_\_. [16, 32]
21. What is the value of the tens place in 76? [7]
22. Add  $67 + 22$ . [89]
23. If there are 50 apples and 15 are eaten, how many are left? [35 apples]
24. Subtract 45 from 90. [45]
25. What is 11 times 3? [33]
26. Add 42 and 29. [71]
27. If a squirrel gathers 8 acorns each day for 6 days, how many acorns does it gather? [48 acorns]
28. Double the number 12. [24]
29. What is 30 more than 60? [90]
30. Find the missing number:  $\_ + 50 = 100$ . [50]



# DAILY MATH CHALLENGE ANSWERS

## OCTOBER

1. If there are 20 candies in a bag and 7 are eaten, how many are left? [13 candies]
2. Subtract 13 from 40. [27]
3. What is 6 times 3? [18]
4. Add 28 and 11. [39]
5. What number comes before 31? [30]
6. Complete the sequence: 10, 20, 30, \_\_, \_\_. [40, 50]
7. If you carve 1 pumpkin every day for 4 days, how many pumpkins do you carve? [4 pumpkins]
8. What is 50 more than 25? [75]
9. Find the missing number:  $100 + \_ = 200$ . [100]
10. Subtract 15 from 90. [75]
11. If 8 kids each bring 2 ghost decorations, how many decorations are there? [16 decorations]
12. What is 7 times 6? [42]
13. Count by fours: 4, 8, 12, \_\_, \_\_. [16, 20]
14. Find the sum of 35, 15, and 10. [60]
15. What is 22 less than 80? [58]
16. If you light 5 candles each day for 6 days, how many candles do you light? [30 candles]
17. Double the number 21. [42]
18. What is 45 more than 30? [75]
19. Subtract 50 from 150. [100]
20. Complete the sequence: 50, 55, 60, \_\_, \_\_. [65, 70]
20. What is the value of the tens place in 97? [90]
22. Add  $76 + 18$ . [94]
23. If there are 40 spiders in a web and 10 crawl away, how many are left? [30 spiders]
24. Subtract 18 from 40. [22]
25. Multiply 4 by 9. [36]
26. Add 55 and 24. [79]
27. If you collect 7 treats each night for 5 nights, how many treats do you collect? [35 treats]
28. Double the number 19. [38]
29. What is 15 less than 50? [35]
30. Find the sum of 45, 25, and 15. [85]
31. Complete the sequence: 100, 90, 80, \_\_, \_\_. [70, 60]

## NOVEMBER

1. If a turkey weighs 18 pounds and 6 pounds are eaten, how much is left? [12 pounds]
2. Subtract 14 from 50. [36]
3. What is 4 times 7? [28]
4. Add 16 and 23. [39]
5. What number comes after 68? [69]
6. Complete the sequence: 12, 24, 36, \_\_, \_\_. [48, 60]
7. If 5 pies are baked each day for 3 days, how many pies are baked? [15 pies]
8. What is 20 more than 55? [75]
9. Find the missing number:  $25 + \_ = 100$ . [75]
10. Subtract 30 from 70. [40]
11. If 3 families each bring 12 dishes to a potluck, how many dishes are there? [36 dishes]
12. What is 8 times 8? [64]
13. Count by sixes: 6, 12, 18, \_\_, \_\_. [24, 30]
14. Find the sum of 40, 30, and 25. [95]
15. What is 19 less than 70? [51]
16. If you pick 6 leaves each day for 5 days, how many leaves do you pick? [30 leaves]
17. Double the number 25. [50]
18. What is 62 more than 35? [97]
19. Subtract 50 from 150. [100]
20. Subtract 25 from 100. [75]
21. Complete the sequence: 11, 22, 33, \_\_, \_\_. [44, 55]
22. What is the value of the tens place in 85? [80]
23. Add  $63 + 29$ . [92]
24. If there are 54 cranberries in a bowl and 18 are eaten, how many are left? [36 cranberries]
25. Multiply 5 by 8. [40]
26. Add 26 and 33. [59]
27. Subtract 19 from 60. [41]
28. If you cook 4 dishes each day for 7 days, how many dishes do you cook? [28 dishes]
29. Double the number 22. [44]
30. What is 35 more than 40? [75]
31. Find the missing number:  $120 + \_ = 150$ . [30]

## DECEMBER

1. If there are 24 ornaments and 8 fall, how many are left? [16 ornaments]
2. Subtract 22 from 60. [38]
3. What is 9 times 4? [36]
4. Add 45 and 16. [61]
5. What number comes before 100? [99]
6. Complete the sequence: 25, 50, 75, \_\_, \_\_. [100, 125]
7. If 10 candy canes are shared equally among 5 kids, how many does each get? [2 candy canes]
8. What is 40 more than 30? [70]
9. Find the missing number:  $150 + \_ = 200$ . [50]
10. Subtract 80 from 120. [40]
11. Count by sevens: 7, 14, 21, \_\_, \_\_. [28, 35]
12. If 4 families each hang 6 wreaths, how many wreaths are hung? [24 wreaths]
13. What is 5 times 9? [45]
14. Find the sum of 33, 27, and 15. [75]
15. What is 14 less than 50? [36]
16. If you light 3 candles each night for 8 nights, how many candles are lit? [24 candles]
17. Double the number 19. [38]
18. What is 28 more than 47? [75]
19. Subtract 60 from 140. [80]
20. Complete the sequence: 13, 26, 39, \_\_, \_\_. [52, 65]
21. What is the value of the tens place in 92? [9]
22. Add  $84 + 36$ . [120]
23. If there are 100 cookies and 34 are eaten, how many are left? [66 cookies]
24. Subtract 33 from 70. [37]
25. Multiply 3 by 11. [33]
26. Add 66 and 27. [93]
27. If 12 stockings are hung and 5 are filled, how many are left empty? [7 stockings]
28. Double the number 24. [48]
29. What is 25 less than 100? [75]
30. Find the sum of 50, 40, and 10. [100]
31. Complete the sequence: 60, 70, 80, \_\_, \_\_. [90, 100]